

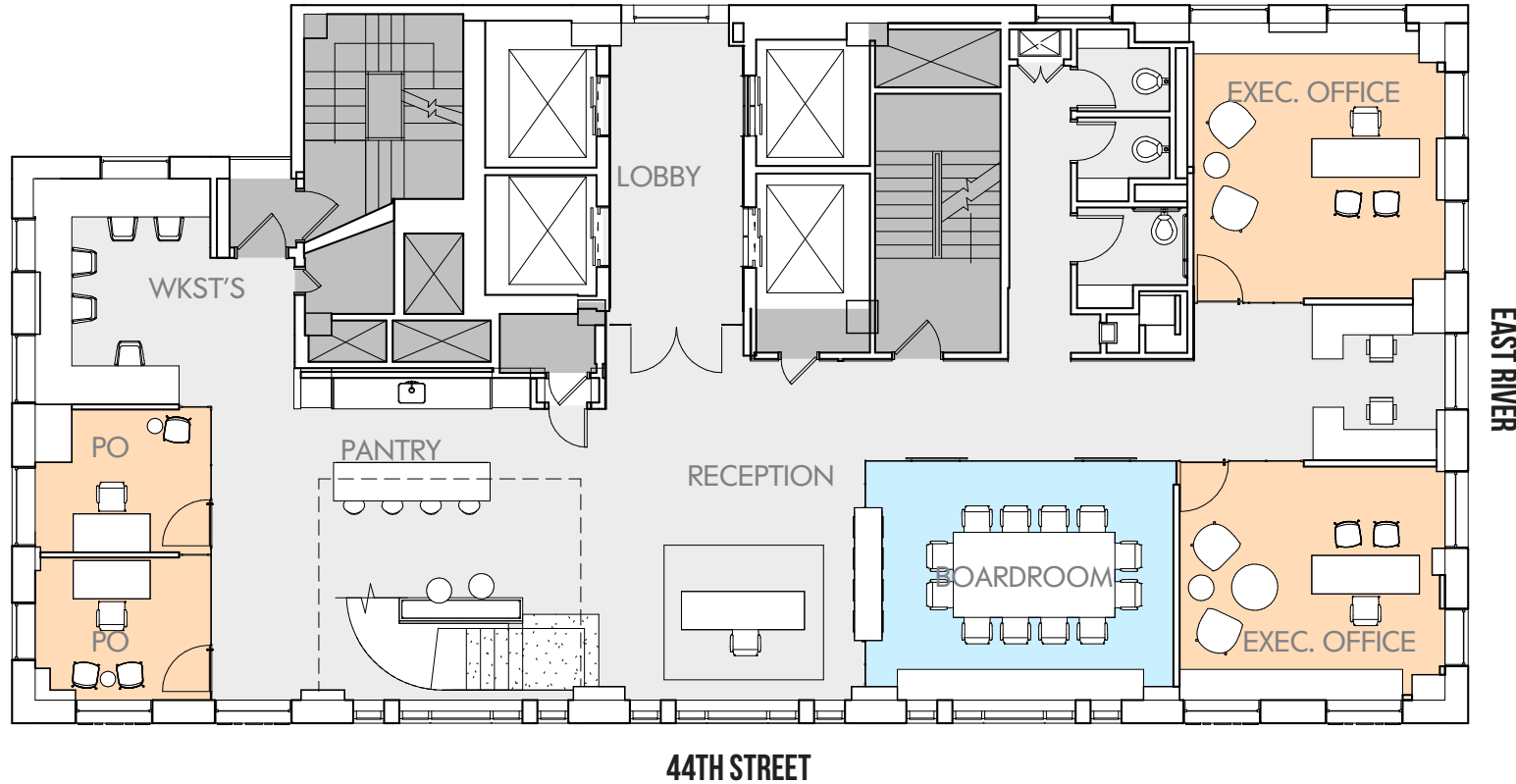


WWW.10GRANDCENTRAL.COM

# PH 35TH FLOOR

## 9,683 RSF

- HIGH-END MODERN TURNKEY INSTALLATIONS
- CEILING HEIGHTS 11'-3"
- BUILDING AMENITY LOUNGE WITH OUTDOOR TERRACE, CAFÉ AND CONFERENCE FACILITIES
- NEW LOBBY AND FAÇADE ENHANCEMENTS
- ABUNDANCE OF LIGHT AND AIR
- STEPS FROM GRAND CENTRAL TERMINAL
- 1930'S ELY JACQUES KAHN MASTERPIECE PERFECTED BY STUDIOS ARCHITECTURE
- WIRED GOLD CERTIFICATION PENDING



**MITCHELL KONSKER**  
 VICE CHAIRMAN  
 (212) 812-5766  
 MITCHELL.KONSKER@AM.JLL.COM

**BENJAMIN BASS**  
 MANAGING DIRECTOR  
 (212) 812-6026  
 BENJAMIN.BASS@AM.JLL.COM

**KIP ORBAN**  
 ASSOCIATE  
 (212) 812-5726  
 KIP.ORBAN@AM.JLL.COM

**COLLEEN HOLLOWOOD**  
 ASSOCIATE  
 (202) 719-5877  
 COLLEEN.HOLLOWOOD@AM.JLL.COM

**CARLEE PALMER**  
 ASSOCIATE  
 (212) 812-6514  
 CARLEE.PALMER@AM.JLL.COM

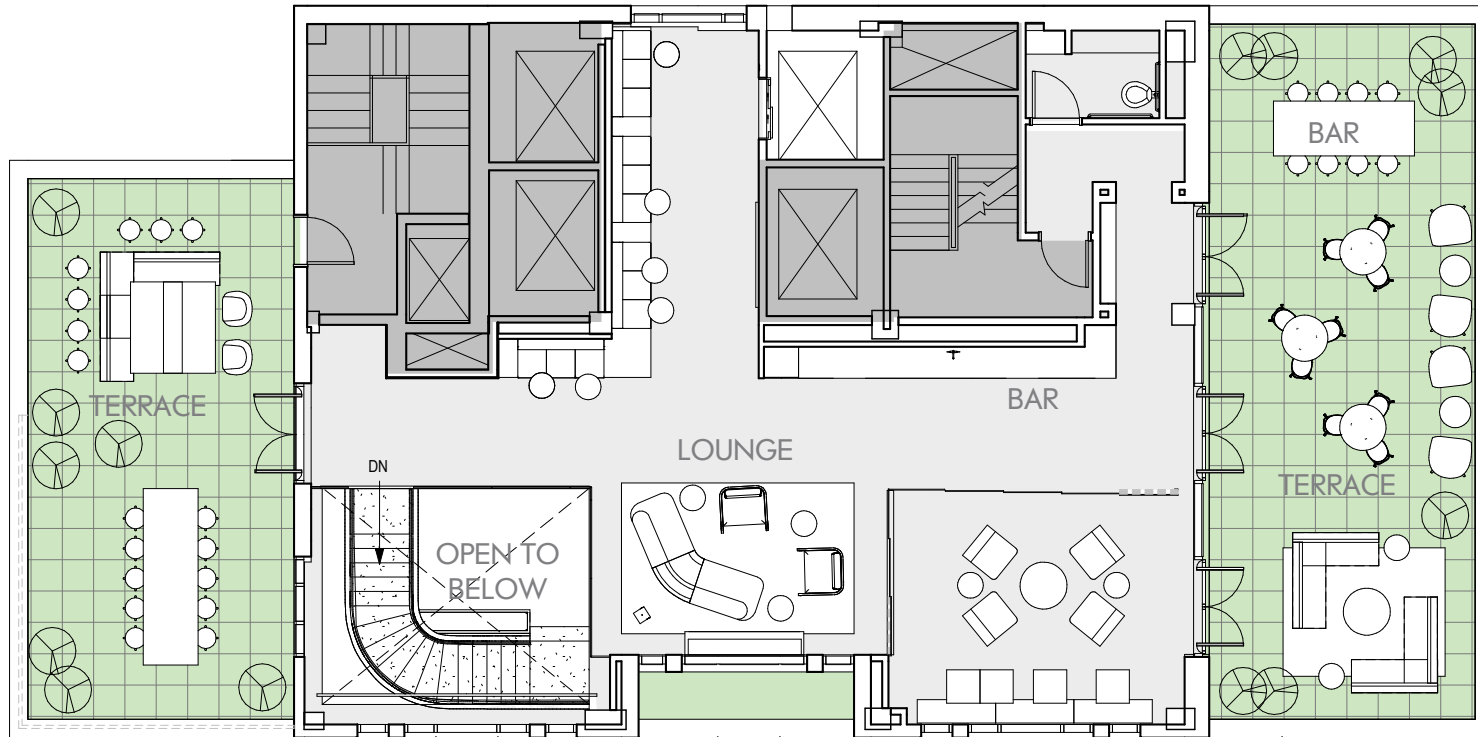


WWW.10GRANDCENTRAL.COM

# PH 36TH FLOOR

## 9,683 RSF

- HIGH-END MODERN TURNKEY INSTALLATIONS
- CEILING HEIGHTS 11'-3"
- BUILDING AMENITY LOUNGE WITH OUTDOOR TERRACE, CAFÉ AND CONFERENCE FACILITIES
- NEW LOBBY AND FAÇADE ENHANCEMENTS
- ABUNDANCE OF LIGHT AND AIR
- STEPS FROM GRAND CENTRAL TERMINAL
- 1930'S ELY JACQUES KAHN MASTERPIECE PERFECTED BY STUDIOS ARCHITECTURE
- WIRED GOLD CERTIFICATION PENDING



44TH STREET

EAST RIVER



**OTJ**  
ARCHITECTS



**MITCHELL KONSKER**  
VICE CHAIRMAN  
(212) 812-5766  
MITCHELL.KONSKER@AM.JLL.COM

**BENJAMIN BASS**  
MANAGING DIRECTOR  
(212) 812-6026  
BENJAMIN.BASS@AM.JLL.COM

**KIP ORBAN**  
ASSOCIATE  
(212) 812-5726  
KIP.ORBAN@AM.JLL.COM

**COLLEEN HOLLOWOOD**  
ASSOCIATE  
(202) 719-5877  
COLLEEN.HOLLOWOOD@AM.JLL.COM

**CARLEE PALMER**  
ASSOCIATE  
(212) 812-6514  
CARLEE.PALMER@AM.JLL.COM